

# SIEGELSON

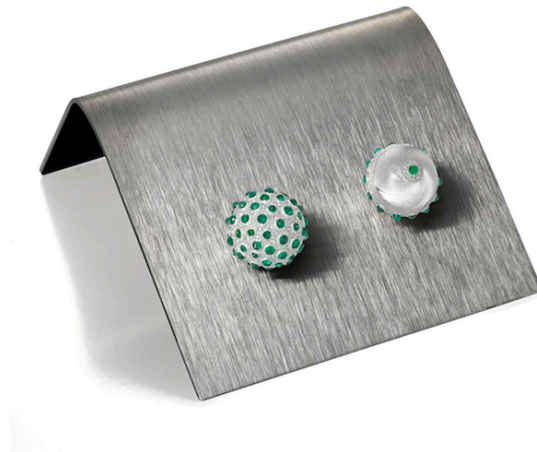
NEW YORK · ESTABLISHED 1920

RARE COLLECTIBLE JEWELS

FOR IMMEDIATE RELEASE

## **SIEGELSON IS NOW THE GALLERY REPRESENTING THE JEWELRY OF NEW YORK ARTIST DANIEL BRUSH**

**A selection of jewelry by Brush will be offered by Siegelson at  
TEFAF Maastricht on March 16–24, 2019**



Earrings from AL 13 series by Daniel Brush

Image courtesy of Siegelson, New York, 212-832-2666, [www.siegelson.com](http://www.siegelson.com)

New York — Siegelson, New York’s most respected gallery of rare and collectible jewels, is now representing the jewelry of visionary New York artist, Daniel Brush (b. 1947). Siegelson will introduce a new series of handmade, unique aluminum earrings by Brush, titled: AL13 at TEFAF (Stand 146) on March 16–24, 2019 in Maastricht, Netherlands.

Siegelson’s partnership with Brush marks the first time that the artist will work with representation for his jewelry. Brush said, “Lee Siegelson is one of the greatest collectors; he’s passionate about jewelry, and I trust him. I am thrilled to have Siegelson premiere AL 13 at TEFAF Maastricht alongside the greatest paintings and jewelry in the world.”

AL 13 is a series of bombé, spherical, and hexagonal aluminum earrings, unique and handmade by the artist. The earrings are created from industrial rods and sheets of aluminum, which then go through complex transformative processes combining turning, chasing, die sinking, embossing, engraving and polishing by hand, before being set with natural colored stones such as Burmese rubies and Colombian emeralds. The studs are composed of aircraft grade aluminum, known for its combination of strength and weldability. On the spherical earrings, the bezels for the set stones are raised from the sphere and not secondarily applied, a method unique to Brush that requires unparalleled skill. Some of the

earrings feature hand carved and polished optically clear rock crystal hemispheres, filled with precious stones or rare metals that move with the wearer. Each unique earring pair takes between 80 and 150 hours to complete. An extraordinary unique necklace has also been crafted as part of the line to accompany the display.

Said Lee Siegelson: “After twenty years of friendship with this legendary creator and of showing and placing his works one-by-one with prominent collectors of art and jewelry, I am delighted that Siegelson is now the official jewelry gallery of Daniel Brush. When I first encountered Daniel’s AL 13 series, I was astounded by the beauty and quality of these earrings, which appear to glow in the light. We look forward to introducing these one-of-a-kind works of art at TEFAF Maastricht, where we are a first-time exhibitor this year.”

Daniel Brush has created an unparalleled body of work over the past four decades, including jewelry, paintings, drawings, sculptures and objects. After retiring from teaching at Georgetown University from a tenured position, he moved to New York City with his companion, Olivia, in 1978. Since then, working in seclusion from his historic Manhattan loft, he has continued to make large-scale paintings, a multi-year series of drawings, and series after series of objects of virtue and jewels. After more than forty years of research into the history of jewels combined with his other worldly skill in metalwork techniques, Daniel Brush’s reputation is without equal evidenced by his museum quality pieces, often using humble materials. His jewelry, which has rarely come to market, has become some of the most sought after in the world.

Daniel Brush’s resume includes one person exhibitions at The Phillips Collection, Washington, D.C., (1973), The Corcoran Gallery of Art, Washington D.C. (1976), the Delaware Art Museum (1983); The Smithsonian Institution, The Renwick Gallery of the National Museum of American Art, Washington D.C. (1998–1999); The Lannan Foundation, New Mexico (2003–2004); and the Museum of Arts and Design, New York (2012), and included in the historic exhibition “Jewelry: The Body Transformed” at The Metropolitan Museum of Art, New York City, (2018). “Torque” the included jewel was acquired by the Met.

L’École, the School of Jewelry Arts supported by Van Cleef and Arpels mounted two exhibitions of Brush’s jewels. CUFFS and NECKS, a visual poetry book supported by 117 jeweled collars debuted in Paris, Fall 2017. CUFFS AND NECKS was presented in New York City at the Academy Mansion, Fall 2018.

Brush’s work has been the subject of seven monographs. Rizzoli ELECTA will publish Daniel Brush *Jewels Sculpture*, September 2019, written by Vivienne Becker, with an introduction by Nicolas Bos, CEO of Van Cleef and Arpels.

### **About Siegelson**

Siegelson is a world-renowned gallery offering rare collectible jewels. Lee Siegelson, a third-generation gem and jewelry dealer, has a discerning eye for acquiring unique and important creations. Siegelson has bought and sold the greatest examples of jewelry for nearly a century. In the past decade, the company has loaned more than one hundred works to more than twenty-five exhibitions and has sold twenty jewels to museum collections. Siegelson will celebrate its 100<sup>th</sup> anniversary in 2020.

### **Press Contact**

FITZ & CO | Allison Therrien | 646 589 0921 | [atherrien@fitzandco.com](mailto:atherrien@fitzandco.com)