



F I T Z
& C O

April 2024

La Biennale di Venezia
2024

FITZ Clients Collateral
Exhibitions and Events

25 + YEARS OF ART &
CULTURE STRATEGY

FITZ & CO in Venice

FITZ & CO is working closely with several prestigious organizations to present collateral exhibitions during La Biennale di Venezia 2024, including 1OF1, Ben Brown Fine Arts, Galleria Continua, Gwangju Biennale, Malevich.io with TCollection, and Zuecca Projects Venice.

Exhibitions

- **1OF1** – Sam Spratt: *The Monument Game*
- **Ben Brown Fine Arts** – *Planète Lalanne*
- **Galleria Continua** – Ai Weiwei: *Neither Nor*
- **Gwangju Biennale** – *Madang: Where We Become Us*
- **Malevich.io and TCollection** – *I'm Not Afraid of Ghosts*
- **Zuecca Projects Venice** – *THE ELEPHANT AND THE BLIND MAN & Estranged from Nature*

Highlights

- **1OF1** – Sam Spratt: *The Monument Game*
- **Ben Brown Fine Arts** – *Planète Lalanne* & Media Lounge
- **Gwangju Biennale** – *Madang: Where We Become Us*

Events

- Saturday, April 13: *Neither Nor* by Galleria Continua
- Tuesday, April 16: *Estranged from Nature* by Zuecca Projects
- Tuesday, April 16: *I'm Not Afraid of Ghosts* by malevich.io
- Tuesday, April 16: *Planète Lalanne* by Ben Brown Fine Arts
- Tuesday, April 16: Sam Spratt: *The Monument Game* by 1OF1
- Thursday, April 18: *Madang: Where We Become Us* by Gwangju Biennale
- Thursday, April 18: *THE ELEPHANT AND THE BLIND MAN* by Zuecca Projects
- Thursday, April 18: *Planète Lalanne* by Ben Brown Fine Arts
- Friday, April 19: *Planète Lalanne* by Ben Brown Fine Arts



Ai Weiwei, Porcelain Cube, 2009
Courtesy Ai Weiwei Studio and Galleria Continua.



F I T Z

Exhibitions

FITZ & CO Projects in Venice

& C O

Ben Brown Fine Arts

Planète Lalanne

***Planète Lalanne* | April 17 – November 3, 2024 | Palazzo Rota Ivancich**

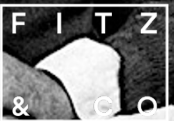
'Planète Lalanne,' a major exhibition at Venice's historic Palazzo Rota Ivancich will display 150 works by Claude and François-Xavier Lalanne, curated by Jerome Neutres. This exhibition, the largest of its kind in Italy, includes François-Xavier's full collection of bars, Claude's Choupatte in various sizes, and a custom Lalanne bed from Ben Brown's collection. The exhibition is a highlight of a two-decade-long partnership between the Lalanne and Ben Brown Fine Arts, showcasing their surreal and practical creations to an international audience.

Media Lounge | April 17 – 28, 2024 | 11AM - 6PM | Palazzo Rota Ivancich

For inquiries, please reach out to Lachlan Woolsey at lwoolsey@fitzandco.com.



Claude and François-Xavier Lalanne.
Image courtesy of Ben Brown Fine Arts



Gwangju Biennale

Mandang: Where We Become Us

**Madang: Where We Become Us | April 20 – November 24, 2024 |
Il Giardino Bianco Art Space**

'Madang: Where We Become Us,' a special commemorative archival exhibition marking the 30th anniversary of the Gwangju Biennale Foundation, reflects on the biennale's history and envisions its future. This exhibition is comprised of archival materials accumulated over the years, works from the Gwangju Biennale Foundation collection, and additional works expanding its significance. 'Madang: Where We Become Us' is an official Collateral Event at the 60th International Art Exhibition of La Biennale di Venezia.

Opening Ceremony | April 18, 2024 | 11 AM | Il Giardino Bianco Art Space

For inquiries and RSVP, please reach out to Yun Lee at ylee@fitzandco.com.



Nam June Paik, Dolmen, 1995, Mixed media.
Courtesy Gwangju Biennale Foundation



Sylbee Kim, Unindebted Life, 2021, Single channel
4K transferred to HD, color, sound, 9:23 min.
Courtesy the artist.

1OF1

Sam Spratt: *The Monument Game*

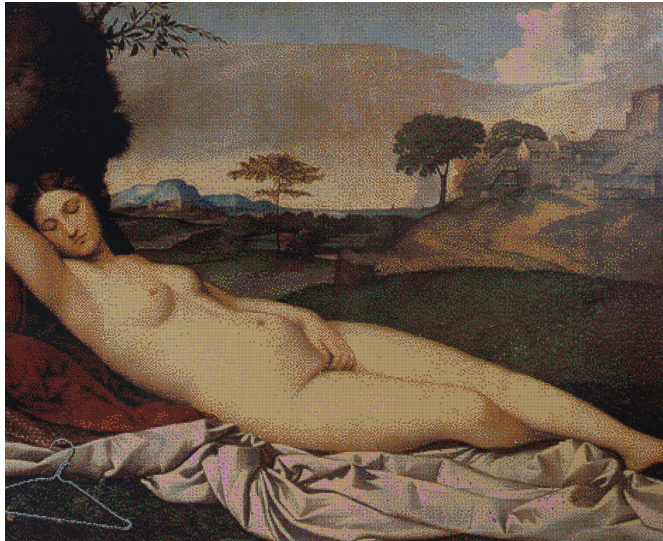
**Sam Spratt: 'The Monument Game' | April 17 - June 21, 2024 | Docks
Cantiere Pietro Cucchini**

1OF1, the leading collection of digital art, presents the debut exhibition by digitally native artist Sam Spratt and the first physical presentation of 'The Monument Game.' Sam Spratt has created one of the most successful series in on-chain digital art with "Luci" - an episodic series of digital portraiture and worldbuilding. The Monument Game, the largest painting in the Luci series and originally conceived as a digital experience, adds its first new layer in physical space for audiences in Venice to leave a piece of themselves in a participatory exhibition.

For inquiries and RSVP, please reach out to Sarah St. Amand at:
[sstamand@fitzandco.com](mailto:ssamand@fitzandco.com).



Sam Spratt, IX. *The Monument Game*,
2023. Courtesy the artist and 1OF1.



Ai Weiwei, *Sleeping Venus with Coat Hanger*, 2022, LEGO bricks, 308 x 500,5 cm, 121.6 x 197.04 in. Photographer: Ela Bialkowska, OKNO Studio.

Galleria Continua | Ai Weiwei: *Neither Nor*

Ai Weiwei: *Neither Nor* | April 13 - September 15, 2024 | Galleria Continua, San Gimignano

'[Neither Nor](#),' at Galleria Continua in San Gimignano, is Ai Weiwei's first solo exhibition at the venue in over a decade, coinciding with the Venice Biennale 2024. This extensive display features a vast array of the renowned Chinese contemporary artist's new and signature Lego works, featuring reinterpretations of classical art using LEGO bricks, alongside his inventive transformations of ancient artifacts crafted from porcelain, wood, marble, bamboo, and various mixed media assemblages. providing a unique insight into the works of one of the most influential artists of our time.

For inquiries and RSVP, please reach out to Grace MacDonald at: gmacdonald@fitzandco.com.



From the installation: *I'm Not Afraid Of Ghosts*.
Courtesy of TCollection and Malevich.io.

Malevich.io and Tcollection | *I'm Not Afraid of Ghosts*

***I'm Not Afraid of Ghosts* | April 17 - September 22, 2024 | Palazzo Tiepolo Passi**

Curated by Svetlana Marich and Sarah McCrory, '[I'm Not Afraid of Ghosts](#)' explores various aspects of femininity, including the physicality of the female body, societal expectations of women, and the roles they play in interpersonal relationships. The exhibition features works by 33 artists such as Marlene Dumas, Tracey Emin, Jenny Holzer, and Issy Wood. Accompanying the exhibition is an original composition by Oliver Leith, a renowned British composer. This marks the first public presentation of pieces from the TCollection, owned by entrepreneur Tatiana Fileva, and the debut exhibition in Venice by the multidisciplinary platform Malevich.io.

For inquiries and RSVP, please reach out to Sabrina Hall at: shall@fitzandco.com.



Untitled II (from the series Cinder Forest), 2015.
Courtesy of the artist and Zuecca Projects.

Zuecca Projects | *Estranged from Nature*

Estranged from Nature | April 16 – July 14, 2024 | Squero Castello — Saliza

'[Estranged from Nature](#),' a solo exhibition by Ioan Sbârciu at [Squero](#) highlights the Romanian artist's distinctive style and themes of estrangement, loss, and resilience. Organized by Zuecca Projects and co-curated by Maria Rus Bojan and Alessandro Possati, the exhibition features Sbârciu's dark, post-Communist palette and loosely applied paint, encouraging a reflection on alienation in today's world.

For inquiries and RSVP, please reach out to Sabrina Hall at: shall@fitzandco.com.



Chiara Capellini, Neutrini series.
Courtesy of the artist and Zuecca Projects

Zuecca Projects | *THE ELEPHANT AND THE BLIND MAN – The Matter of the Void*

THE ELEPHANT AND THE BLIND MAN – The Matter of the Void | April 18 – June 29, 2024 |
Libreria Rupture Arts & Books Venezia

'*THE ELEPHANT AND THE BLIND MEN – The Matter of the Void*,' presented by Zuecca Projects and Rupture Arts & Books, showcases Chiara Capellini's artwork at Rupture Arts & Bookshop in Venice. The exhibition, exploring themes of emptiness and indeterminacy in physics, features her paintings, sculptures, a video interview, and a book from her discussion with physicist John Ellis, inspired by the ancient elephant parable to encourage diverse perspectives on complex issues.

For inquiries and RSVP, please reach out to Sabrina Hall at: shall@fitzandco.com.

F I T Z

Events

FITZ & CO Projects in Venice

& C O

Events

Saturday, April 13

- **11 AM: *Neither Nor* by Galleria Continua**
- Private View, Exclusive Lunch, & Reception with Ai Weiwei
- Location: Galleria Continua, San Gimignano
- RSVP: continua@fitzandco.com

Tuesday, April 16

- **2-4 PM: 'Estranged from Nature' by Zuecca Projects**
- VIP / Press Preview
- Location: Squero Castello — Saliza
- RSVP: kharding@fitzandco.com

- **5 PM-LATE: 'I'm Not Afraid of Ghosts' by malevich.io**
- Opening Reception
- Location: Palazzo Tiepolo Passi
- RSVP: shall@fitzandco.com

- **6-8PM: 'Planète Lalanne' by Ben Brown Fine Arts**
- Private View and Cocktails
- Location: Palazzo Rota Ivancich, Venice
- RSVP: lwoolsey@fitzandco.com

- **3-6PM: 'Sam Spratt: The Monumental Game' by 10F1**
- Private View (By invitation only)
- Location: Docks Cantiere Pietro Cucchini
- For Information: sstamand@fitzandco.com

Events

Thursday, April 18

- **11AM: *Madang: Where We Become Us* by Gwangju Biennale**
- Opening Ceremony
- Location: Il Giardino Bianco Art Space
- RSVP: ylee@fitzandco.com

- **11AM: *THE ELEPHANT AND THE BLIND MAN* by Zuecca Projects**
- VIP / Press Preview & Champagne Breakfast
- Location: Libreria Rupture Arts & Books Venezia
- RSVP: kharding@fitzandco.com

- **12-3PM: *Planète Lalanne* by Ben Brown Fine Arts**
- Private View & Brunch
- Location: Palazzo Rota Ivancich, Venice
- RSVP: lwoolsey@fitzandco.com

Friday, April 19

- **12-3PM: *Planète Lalanne* by Ben Brown Fine Arts**
- Private View & Brunch
- Location: Palazzo Rota Ivancich, Venice
- RSVP: lwoolsey@fitzandco.com



Installation view: 'I'm Not Afraid Of Ghosts' (17 April – 22 September 2024) at Palazzo Tiepolo Passi. Image courtesy of TCollection and Malevich.io.

F I T Z

FITZ On The Ground
Onsite Contacts

& C O

FITZ On The Ground

Our FITZ & CO on-ground representatives are poised to facilitate onsite press inquiries for our esteemed clients' projects at the La Biennale di Venezia 2024



Sara Fitzmaurice
CEO & President
@fitzandco



Yun Lee
Vice President
+1 (847) 363 8492



Lachlan Woolsey
Account Executive
+1 (917) 753 4774



Sarah St. Amand
Senior Account Executive
+1 (978) 844 4086



Sabrina Hall
Account Coordinator
+1 (650) 223 4948